

# Elisava's Welcome Guide

Topics <sup>(20)</sup> Beauty/Care/City/Craft/  
Creative Activism/Culture/Data/  
Efficiency/Emergency/Health/  
Identity/Inclusivity/Materials/Nature/  
New European Bauhaus/Phygital/  
Purposeful Business/Robotics/  
Social/Sustainability

The topics of the front page constitute our drivers for positive impact and transformation and they serve as an exploratory guide of Elisava's dynamic projects and activities in contemporary design, communication and engineering.

Your manual of instructions  
for a safe journey.

Please take a moment to learn the user's manual of Elisava. This guide will give you all the information you'll need for your daily life at the university.

/ Welcome	02
/ University maps	06
/ Useful information	10
/ Elisava community	13
/ What's going on?	15
/ University services	16
/ Spaces & Facilities	21
/ Materials	27

1. Use me, don't stack me. We are a team. This is the moment when you start your own adventure. We wrote this manual to be a helpful guide to allow you to have control and confidence when you arrive at Elisava. A travel guide, a manual is important for any trip. It can help you with details, to find surprises and to know how to get the most out of your journey.

# Welcome/ Benvingut / Bienvenida

2. Every so often, though, we like to get really specific and deep dive into the complexities of the university. Make your mind ready to discover Elisava. And do not forget to come and ask whenever you need. Now is your moment. Sit back, relax and enjoy your time.

**Javier Peña**  
General Director

This guide is an introduction to our university, which starting now, is also yours. Through creativity, initiative, critical thought and a transdisciplinary perspective, you'll come to understand design and engineering as strategic elements for contributing value and relevance to the world we live in.

In a climate of constant change, characterised by rapid shifts in the relationships between

society and its surroundings, at Elisava we uphold a staunch social, scientific and cultural commitment that questions knowledge in order to interpret and understand our present, while designing for the future we hope to see. Along the way, our most fundamental goal is to accompany and guide you in making your own ambitions and dreams a reality.

**Santiago Albert**  
Director of Master's and Postgraduate Programmes  
and Continuing Education

At Elisava you won't just be completing a Master's or a Postgraduate Degree. You'll be sharing experiences with people from more than 80 different nationalities. You'll have a wealth of opportunities, like cross-disciplinary workshops – which will also connect you with students from other programmes, lectures by leading figures in the world of design and engineering, and technical capsules in a variety of fields to broaden your knowledge.

And you'll become part of a powerful network of designers, engineers, architects, illustrators, communicators, etc. from all over the world who share a common goal: expanding their personal

and professional capabilities. Take advantage of all these relationships, your connections with the directors of the Master's and Postgraduate programmes and all the advantages of Elisava Alumni, the university's alumni association, to which you will belong from the get-go. Plus, each year, we organise collaborations with companies and social projects in which you will be able to participate. All this is Elisava. As well as all the experiences you'll have during and after your programme. Make the most of it all!

# /University Maps/

## Ground Floor

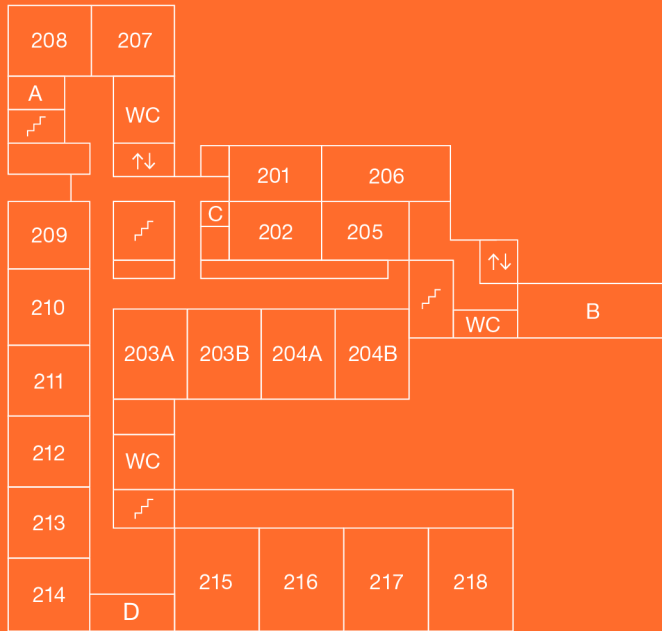


## 1st Floor



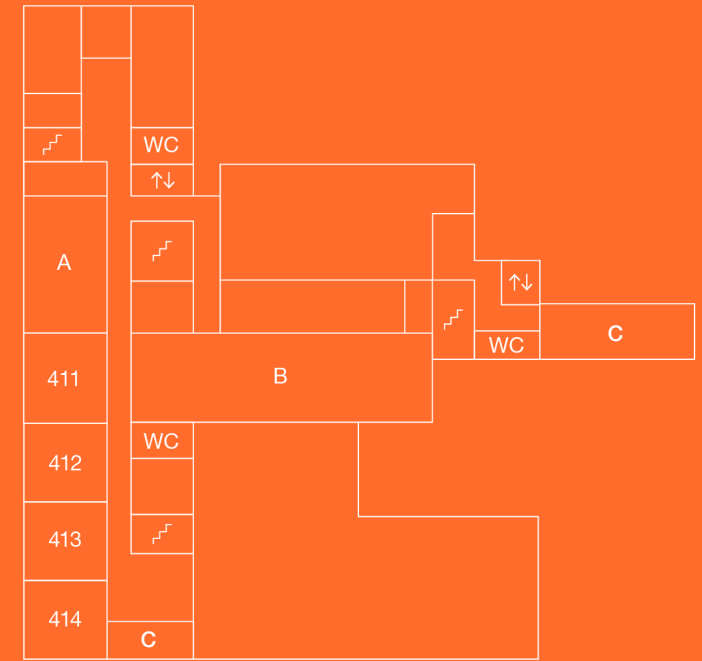
# 2nd Floor

- A. Masters Admissions and Student Welfare
  - B. Degree Professors' Room
  - C. Reprography Service
  - D. Elisava Business & Entrepreneurship
- PC Rooms  
209, 210, 211, 213, 214



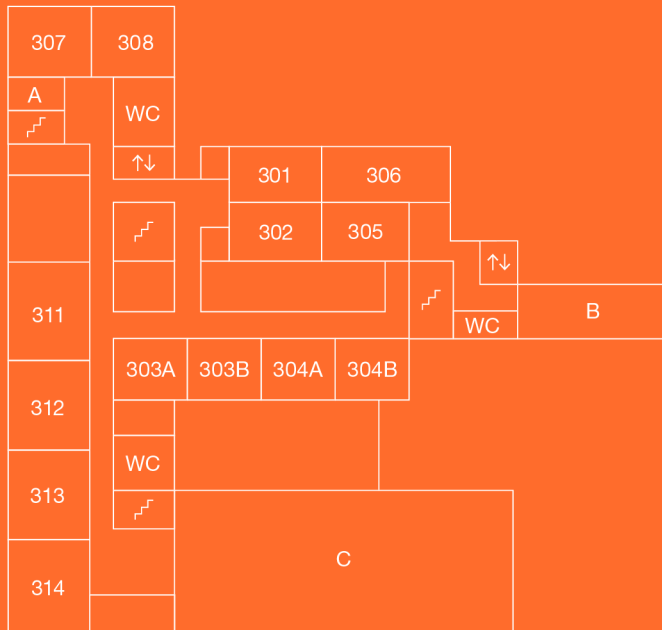
# 4th Floor

- A. Administration
- B. Enric Bricall Library
- C. Elisava Business and Entrepreneurship



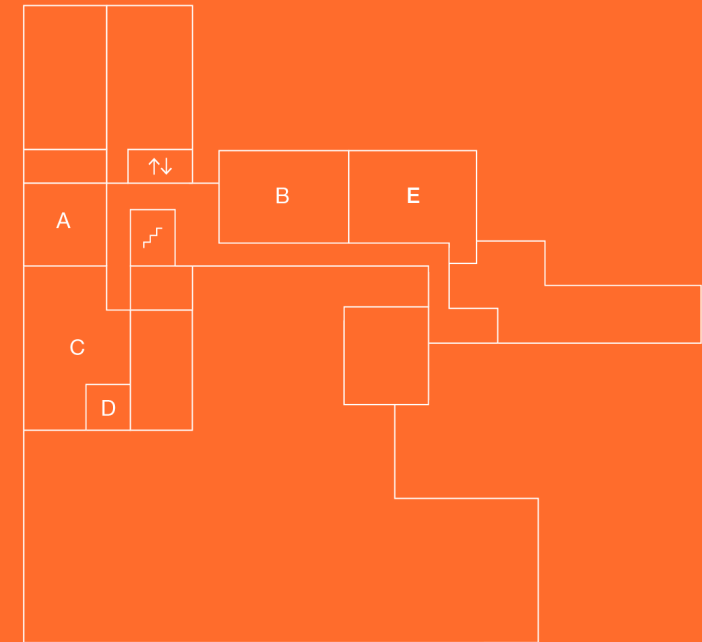
# 3rd Floor

- A. Masters Coordination
- B. Masters' and Postgraduate Programmes Professors' Room
- C. Terrace



# Basement Floor

- A. Workshops Room
- B. Media Lab
- C. Interaction/ Electronics Lab + Motion Capture
- D. Aha Radio
- E. Bio Lab



# /Unleashing your potential – useful information/

Read through this guide and keep it handy. It will be very useful! It's a good introduction, and it will help you get situated with a broad overview of the university.

## Elisava Life App: Connect with Elisava

Find out about everything that's happening at Elisava through our app. You'll be able to book rooms, check your daily academic schedule, participate in academic polls, buy Elisava's merchandise, etc.

There are many groups for sharing inspiration, finding accommodation, sharing materials for projects, chatting or hanging out in the vibrant cultural life in Barcelona. Download it from the App Store or Google Play.



Scan the QR code and download Elisava Life.

## Follow Elisava on social media!

Instagram & Twitter  
[@elisavabcn](https://www.instagram.com/elisavabcn)

Tiktok  
[@elisavabarcelona](https://www.tiktok.com/@elisavabarcelona)

Facebook  
[@elisavabarcelona](https://www.facebook.com/elisavabarcelona)

LinkedIn  
[linkedin.com/school/elisava](https://www.linkedin.com/school/elisava)

## Elisava access credentials Set up your email account!

A few days before beginning classes and after registration, you'll get an e-mail containing your username and password to access Elisava's resources. You'll also find a link to the Virtual Campus, where you'll find all the instructions for setting up your Elisava email account and signing up for other services. The IT team is here to help you with any problems.

## Virtual Campus [cv.elisava.net](https://cv.elisava.net)

The Virtual Campus contains all the information and resources for your courses: teaching plans, academic calendars, rules and regulations, schedules, your marks, etc. Connect to the Virtual Campus with your username and password.



### Wi-Fi Connection

You'll have access to free Wi-Fi throughout the university. Sign in with your username and password. Check out the Virtual Campus for all the necessary configuration info, as well as the users' manuals.

### Get your student ID card

Once you download Elisava Life app, you'll be able to get your digital university ID in the personal area of the application. Remember that your ID will get you discounts at many of Barcelona's museums and shops!

### Make the most of our computing resources

Download the Microsoft Office package for free and work online with Office 365. You'll also have access to 1TB of cloud storage (OneDrive) and Solidworks design software (use your Elisava username and password). Access Office 365 via office.com with your username and password.

### Where & When to find us

La Rambla 30 - 32, 08002  
Barcelona

Opening times  
Monday — Friday  
8.00 a.m. — 10 p.m.

### Open Saturdays

At the end of each quarter, coinciding with exams and final presentations, we open our doors on two Saturdays so you can come and meet up with your classmates. You'll have access to the library, students' rooms, computer rooms, and the prototype workshop. Consult the academic calendar for the exact dates.

### Elisava Shop [shop.elisava.net](http://shop.elisava.net)

Elisava Shop is the online space where we share and sell student projects, publications and merchandising of the university. Check our capsule collections out!

# /Out-of-class university life/

Stay up to date and join  
the Community

**Elisava Equality**  
[igualtat@elisava.net](mailto:igualtat@elisava.net)

Elisava Equality is a commission with the aim of combating inequality associated with sex, gender, sexual identity or orientation, and violence against women. Rosario Hernández is the university's Equality officer, responsible for ensuring compliance with the equality plan.

**Choir**  
[gospel@elisava.net](mailto:gospel@elisava.net)

Cor 4 18 is a choral group open to the entire Elisava community. The choir is responsible for performing at Elisava's graduation events, Christmas concerts and other events.

**AHA Radio**  
[@aha.radio](http://aha.radio)

An initiative launched by students: Elisava's online radio is the speaker for the university community. Podcasts can be listened to on the website [aharadio.elisava.net](http://aharadio.elisava.net), Mixcloud, Spotify and iVoox. If you want to join AHA Radio or suggest a new radio show you can contact them by DM on Instagram or by e-mail ✉ [aharadio@elisava.net](mailto:aharadio@elisava.net).

**Theatre Group**  
[teatre@elisava.net](mailto:teatre@elisava.net)

Join the school's theatre group! The group provides training for the Elisava community who are interested in the world of acting, set design, costume design... Every year in mid-October, a session is held and at the end of the course, a play is performed, open to the entire community.

**Elisava Nights**  
[@elisavanights](https://www.instagram.com/elisavanights)

Elisava Nights is a group of students who organise parties, gatherings and other events at Elisava. If you'd like to participate, send them a DM on Instagram.

Keep up with everything happening outside of class and get involved. There's a lot going on at Elisava! Throughout the year, you'll have many opportunities to attend lectures and workshops, and to participate in projects in collaboration with companies, etc. Stay tuned to the app, social media and online calendar and take advantage of all these opportunities!

# /What's going on?/

**Exhibitions**

Don't miss the exhibitions in the Àgora, the Atri (1st floor), and other spaces at the university.

**Lectures**

Talks with inspiring international professionals of design, engineering, arts, communication, architecture... in the Auditorium Aleix Carrió.

**Workshops & Innovation Labs**

Collaborate on projects with companies, institutions, NGOs, etc. You can join these transversal projects with students from other courses. You'll be more than welcome to participate in the yearly Open Calls.

## Administration

4th floor

Monday to Friday 10 a.m. – 1 p.m.  
Monday, Tuesday and Thursday  
4 p.m. – 7 p.m.

✉ [administracio@elisava.net](mailto:administracio@elisava.net)

At the Administration offices,  
we'll help you manage tuition  
payments, invoices, certificates,  
diplomas, etc.

## Academic Management

1st floor

Monday to Friday 8 a.m. – 6 p.m.

✉ [uga@elisava.net](mailto:uga@elisava.net)

- + We'll help you with all the red tape during your studies at Elisava and beyond.
- + Enrolment and Records (Undergraduate degrees and Elisava programmes).
- + Applications (recognition of credits, postponement requests, diploma requests, records transfers, etc.).
- + Scholarships and exchanges.
- + Collaboration agreements and internship contracts with companies, institutions and NGOs.

## Undergraduate Student Coordination

4th floor

Anna Baldrich

✉ [abaldrich@elisava.net](mailto:abaldrich@elisava.net)

Anna Blanco

✉ [ablancom@elisava.net](mailto:ablancom@elisava.net)

Esther Brosa

✉ [ebrosa@elisava.net](mailto:ebrosa@elisava.net)

Lourdes Sáez

✉ [lsaesz@elisava.net](mailto:lsaesz@elisava.net)

Attention undergraduate students! Remember these names: Annas, Esther and Lourdes. They are the coordinators who will be in contact with you during your stay at Elisava.

## Undergraduate Academic Direction

Cristina Taverner  
Academic Director

✉ [ctaverner@elisava.net](mailto:ctaverner@elisava.net)

Danae Esparza

Head of the Undergraduate  
Degree in Design

✉ [desparza@elisava.net](mailto:desparza@elisava.net)

Marta González

Head of the Undergraduate  
Degree in Industrial Design  
Engineering

✉ [mgonzalez@elisava.net](mailto:mgonzalez@elisava.net)

### Masters Management Student coordination

3rd floor  
9 a.m – 1 p.m & 2 p.m – 7.30 p.m

✉ [ugpostgrau@elisava.net](mailto:ugpostgrau@elisava.net)

Anna Blanco

✉ [ablancom@elisava.net](mailto:ablancom@elisava.net)

Thais Caballero

✉ [thaisc@elisava.net](mailto:thaisc@elisava.net)

Cristina Marfà

✉ [cmarfa@elisava.net](mailto:cmarfa@elisava.net)

Sergi Maya

✉ [smayam@elisava.net](mailto:smayam@elisava.net)

Martí Ramírez

✉ [mramirez@elisava.net](mailto:mramirez@elisava.net)

Laura Quesada

✉ [lquesada@elisava.net](mailto:lquesada@elisava.net)

If you are a master or postgraduate student, these are your contact people. They will help you manage schedules, classes and any other doubts related to your studies.

### Masters Direction

Santiago Albert, Master's and Postgraduate Programmes Director

✉ [salbert@elisava.net](mailto:salbert@elisava.net)

### Study Abroad Student Coordination

2nd floor (next to room 208)  
9 a.m. – 1 p.m. and 2 p.m. – 3 p.m.

Cristina Marfà

✉ [cmarfa@elisava.net](mailto:cmarfa@elisava.net)

She will help you manage schedules, classes and any other doubts you may have.

### Students Welfare

2nd floor (next to room 208)  
Monday to Thursday, 12 p.m. – 1 p.m. and 4 p.m. – 5 p.m.

Fernando Eiras

✉ [studentswelfare@elisava.net](mailto:studentswelfare@elisava.net)

The Students Welfare office is here to help you with your non-academic questions. We'll give you the tools you need to make the most of your experience in Barcelona. We offer guidance and orientation and help you take care of issues like finding accommodation, renewing a visa, getting a NIE, etc.

### Students Wellbeing

4th floor

Rosario Hernández

✉ [mhernandezg@elisava.net](mailto:mhernandezg@elisava.net)

If you are an undergraduate student, Rosario will be your contact for any questions or paperwork regarding personal

wellbeing. You will also be assigned a professor who will act as your advisor-mentor and accompany you in your academic development.

### Students Psychologist

✉ [psicoleg@elisava.net](mailto:psicoleg@elisava.net)

In case you need health support from a professional, you can contact this e-mail account anytime and arrange a meeting. Our team is more than willing to help you with any doubts or concern you may have.

### IT Systems

1st floor

Monday to Friday, 8 a.m. – 10 p.m.

✉ [sistemas@elisava.net](mailto:sistemas@elisava.net)

Contact IT if you have any technical questions or problems with Elisava's computing services (e-mail, Virtual Campus, access to computers, Wi-Fi, etc.).

### International Mobility International Exchanges Academic Management

1st floor

Monday to Thursday,  
10.30 a.m. – 6 p.m.

Friday, 8 a.m. – 3 p.m.

International exchanges

Xavier Oliver

✉ [exchange@elisava.net](mailto:exchange@elisava.net)

### Academic coordination, international exchanges

Paolo Sustersic

✉ [psustersic@elisava.net](mailto:psustersic@elisava.net)

We promote international exchanges and manage mobility programs with more than 80 centres in Europe, America, Asia and Australia. We keep tabs on students, both incoming and outgoing, as well as on the mobility of the faculty.

Moreover, we are always open to looking into opportunities for new exchanges for undergraduate students. If you are interested in the Erasmus programs or an academic mobility agreement, don't hesitate to contact us and drop in at the information sessions we organise at the beginning of each academic year!

## Elisava Alumni

3rd floor  
Monday to Thursday,  
10 a.m. – 6 p.m.  
Friday, 10 a.m. – 3 p.m.

✉ [alumni@elisava.net](mailto:alumni@elisava.net)

Elisava Alumni is the association of Elisava's former students, professors and staff. Their main objective is to create and nurture a community that becomes a space for the exchange of knowledge, relationships, opportunities, inspiration and advantages for all its members in the fields of design, engineering, entrepreneurship and innovation, both locally and internationally.

Stay tuned for the multiple events that they organize (networking sessions, meetings, talks, parties...). You can also take part of them!

## Languages – CIC

✉ [idiomes@iccic.edu](mailto:idiomes@iccic.edu)

If you want to study English, French or German, you'll enjoy a 10% discount on courses at the CIC Language School (Via Augusta and Gràcia locations). Just show your student ID card when you sign up.

## Housing

If you need a place to live in Barcelona, you can search our website for residence halls and student accommodation services, offering special conditions for Elisava students. You can also have a look at the group “Looking for accommodation” in the app Elisava Life.

## Lost & Found

Reception (Ground floor)  
Monday to Friday, 8 a.m. – 10 p.m.

The lost and found is located at Reception. If you've lost something, or if you find something that one of your fellow students has lost, they can help you out. Items will be stored for a maximum of 3 months.

## Students E-mail

The school is yours, it is a very important part of your daily life, and at Elisava we want to know your opinion to make you feel at home. We want to know your suggestions for improvement and new ideas, or any questions you would like to share. Send us an e-mail to ✉ [students@elisava.net](mailto:students@elisava.net)!

# /Spaces & Facilities/

The entire university is at your disposal in support of your learning experience. All spaces and classrooms are always open to students, unless they are already in use for a class or an event. Check Elisava Life app for available spaces.

## Prototypes Workshop

Ground floor  
Monday to Friday,  
9 a.m. – 8:30 p.m.

Noel Díaz  
✉ [taller@elisava.net](mailto:taller@elisava.net)

You can make prototypes, scale models and mockups. A workshop where you can manipulate, transform and experiment with materials for didactic purposes, whether for expression, representation or verification. The space is outfitted with machines and tools for working mainly with wood and its derivatives, polyurethane foam, metals and plastics. There are three 3D printers (a Stratasys F170 Professional for printing in ABS, a Sigmax BCN3D for A3, and an Ultimaker3 Extended for A4, printing in PLA and TPU).

## Media Lab & Motion Capture

Basement floor (-1)  
Monday to Friday, 10 a.m. – 2 p.m. and 4 p.m. – 8 p.m.

Bookings  
✉ [mocap@elisava.net](mailto:mocap@elisava.net)

The Medialab is a laboratory for audio-visual research and production (photography, video, postproduction and editing) and for interactive systems (augmented reality, immersive environments and

natural interaction). It has three areas: the chroma space, the photography space and the editing space. You can use the lending services to borrow cameras, microphones, projectors, sensors, etc.

The Mocap is set up for motion capture and processing, along with a recording booth. Remember to read the users' manual ahead of time and make your booking via email!

## Graphic Workshop

1st floor  
Monday to Friday,  
9.30 a.m. – 1.30 p.m.  
and 3.30 p.m. – 7.30 p.m.  
Free access except when  
classes are being held

Jhonson Quintero  
✉ [tallergrafic@elisava.net](mailto:tallergrafic@elisava.net)

Graphic Workshop for printing techniques (by hand, mechanical or digital) and manipulation that are involved in the construction of prototypes and models of graphic elements. The space is outfitted with the necessary tools and machines for printing and binding, both by hand and digitally, and for cutting vectorised originals in adhesive vinyl.

## Science & Technology Lab

1st floor  
9.30 a.m. – 2.30 p.m.  
and 3 p.m. – 8 p.m.  
Free access except when  
classes are being held.

✉ [taller@elisava.net](mailto:taller@elisava.net)

The Science and Technology Laboratory is a space dedicated to materials science. The laboratory is equipped with measuring tools to characterize the materials according to their physical properties. The main objective of the laboratory is to offer you the experience of being able to work in a professional laboratory with own engineering tools.

## Interaction & Electronics Lab

Basement floor (-1)  
9.30 a.m. – 2.30 p.m.  
and 3 p.m. – 8 p.m.

✉ [taller@elisava.net](mailto:taller@elisava.net)

A space for hands-on work and experimentation in electronics and interactive technology. It is outfitted with the necessary equipment for the design and measurement of electronic circuits (power supplies, oscilloscopes, multimetres, protoboards, discrete components, etc.) and for the assembly of interactive prototypes, both

in physical formats (Arduino kits, sensors, actuators, welding kits, etc.) and in virtual or augmented reality.

## Space lab

1st floor  
Monday to Friday,  
9.30 a.m. – 1.30 p.m.  
Free access except when  
classes are being held.

Noel Díaz  
✉ [taller@elisava.net](mailto:taller@elisava.net)

The Space lab is a place for working and sharing knowledge and experiences related to the world of model making and the use of materials centred on space design.

## Materials library

Joaquim Matutano  
✉ [jmatutano@elisava.net](mailto:jmatutano@elisava.net)

## 3D Lab

1st floor. By appointment.

Noel Díaz  
✉ [taller@elisava.net](mailto:taller@elisava.net)

The 3D Lab is ready to help you with your projects. Thanks to BCN3D we have large format Epsilon printers, which allow you to print in 3D on different materials.

## Bio Lab

Basement floor (-1)  
Book your spot in the Biolab  
Microsoft Teams

Juan Crespo  
✉ [jcrespo@elisava.net](mailto:jcrespo@elisava.net)

Lab with equipment such as microscope, stereoscope, hobs, petri dishes, precision scales, 3D printer for soft materials, pipettes, as well as a laminar flow hood for the handling of bio-hazardous agents safely and in conditions of sterility.

## Students' Room

1st floor (next to the cafeteria)  
Monday to Friday, 8 a.m. – 10 p.m.

This space is the epicentre of student life. You can study, do group work, meet up with classmates, or take a break.

## Cafe & Lunchroom

1st floor  
Monday to Friday, 8 a.m. – 7:30 p.m. (lunch 1 p.m. – 3 p.m.).

An essential meeting point for breakfast, lunch, a snack or a drink between classes. You can take your drink out onto the 1st or 3rd floor terraces and enjoy the Barcelona sunshine.

## Terraces

These two spaces are favourite hangout spots for students. You'll find them on the 1st floor next to the cafeteria and on the 3rd floor.

## Àgora & Atri

These are the university's two main exhibition spaces. They are located on the 1st floor, between the Academic Management and the Marketing and Communications department.

## Open Rooms

The laboratories, workshops and classrooms are open to all students. If they haven't been booked for a class, consult the app and they are all yours!

## Auditorium Aleix Carrió

1st floor

Located on the first floor, this is Elisava's lecture hall. Here, you can attend lectures, masterclasses, workshops, etc.

## Computers Room

2nd floor  
Monday to Friday, 8 a.m. – 10 p.m.

In addition to being able to use computers in any of the classrooms, you can do your work in this space outfitted

with PCs (Windows 10) and specific software for design and engineering applications.

## Enric Bricall Library

4th floor  
Monday to Thursday,  
9 a.m. – 8 p.m.  
Friday, 9 a.m. – 7 p.m.

✉ [biblioteca@elisava.net](mailto:biblioteca@elisava.net)

The library has two separate spaces: the entrance area, where newly acquired books and magazines are kept, and the reading room. Use your student ID to borrow books. You can borrow a maximum of 6 books or magazines for a period of 15 days. You'll find international magazines like Frame, Viewpoint, Exit, Eye, Wallpaper, Kinfolk... and many more!

The library has a very interesting Reserve section, a special collection of books that represent the graphic avant-garde of the 20th century. Plus, you can consult more than 44,000 specialised electronic books on the Virtual Campus. Did you know that you can also return your books to the book return in the Students' Room?

## Reprography Service

Students' Room and 202  
Self-service document reproduction using rechargeable cards (printers, scanners and colour or b/w photocopies in A4 and A3). Buy your card in the vending machine at the Students' Room.

## Water Fountains

You'll find drinking fountains on every floor in the university. Bring your water bottle!

## Lockers and Projects Storage

Ground floor  
Monday to Friday, 8 a.m. – 10 p.m.

You can leave your personal items in the lockers throughout the day. For your projects and models, request a space in the project storage room.

## Bicycle Parking

Ground floor  
Monday to Friday,  
8 a.m. – 10 p.m.

We have an indoor parking area for bicycles. You can bring your bike and park it throughout the day. Bring your own bike lock.

## Emergencies & First Aid

We have a small first aid station and a defibrillator. If you feel unwell or have any medical problems, please notify the Academic Management (1st floor). If the emergency occurs outside their opening hours, go to Reception. They will help you and can put you in contact with professional medical assistance, if necessary.

# /Materials/

To make sure you have everything, here is a list of stores where you can buy all the materials you'll need for your projects at Elisava.



## Binding & printing

- [cambrasenquadernador.com](http://cambrasenquadernador.com)  
(Discount 10% digital printing  
+ 5% offset printing)
- [comgrafic.com](http://comgrafic.com)  
[encuadernadorarapid.com](http://encuadernadorarapid.com)  
(Discount 10%)
- [encuadernando.com](http://encuadernando.com)
- [alfambra.cat](http://alfambra.cat)
- [artyplan.com](http://artyplan.com)
- [paperam.net](http://paperam.net)
- [lautomatica.org](http://lautomatica.org)
- [niemon.es](http://niemon.es)
- [thefolioclub.com](http://thefolioclub.com) (Discount 20%)
- [verdi9.com](http://verdi9.com) (Discount 10%  
on large-format printing over A3)
- [bramona.com](http://bramona.com) (Discount 10%,  
except sale items)
- [barcinoweb.com](http://barcinoweb.com)
- [novaerapublications.com](http://novaerapublications.com)
- [rgbprint.net](http://rgbprint.net)
- [copiservei.com](http://copiservei.com)
- [can-boada.com](http://can-boada.com)
- [pressing.es](http://pressing.es)
- [agpograf.com](http://agpograf.com)
- [impressus.es](http://impressus.es)
- [serper.es](http://serper.es)
- [cegeglobal.com](http://cegeglobal.com)
- [dilograf.com](http://dilograf.com)
- [graficasvarias.com](http://graficasvarias.com)
- [digitalscreen.com](http://digitalscreen.com)
- [9disseny.com](http://9disseny.com)
- [tormiq.com](http://tormiq.com)
- [signes.es](http://signes.es)

## Metal

- [castellsvilaseca.com](http://castellsvilaseca.com)
- [ferrobric.com](http://ferrobric.com)
- [ornamentalmac.com](http://ornamentalmac.com)
- [hiperaluminio.com](http://hiperaluminio.com)

## Plastic

- [complasbcn.com](http://complasbcn.com) (Discount 10%)
- [plasticosferplast.com](http://plasticosferplast.com)

## Textiles

- [adelpilar.com](http://adelpilar.com)
- [retalesytelas.es](http://retalesytelas.es) (Discount 15%)
- [jbpsamarretes.com](http://jbpsamarretes.com) (Discount 10%)
- [lacasadelfeltre.com](http://lacasadelfeltre.com)
- [nunoya.com](http://nunoya.com)
- [ribescasals.com](http://ribescasals.com)

## Woods

- [maderasalmer.com](http://maderasalmer.com)
- [fustesfargas.com](http://fustesfargas.com)

## Paper & supplies

- [abacus.coop](http://abacus.coop)
- [arthilgard.com](http://arthilgard.com)
- [barna-art.com](http://barna-art.com)
- [bellesartsferran.com](http://bellesartsferran.com)
- [casapiera.com](http://casapiera.com)
- [lacapell.com](http://lacapell.com) (Discount 15%)
- [lorenteofimatica.com](http://lorenteofimatica.com)
- [raima.cat](http://raima.cat) (Discount 10%)

## Laser cutting

- [cortelaserbarcelona.com](http://cortelaserbarcelona.com)
- [martillo.co](http://martillo.co)
- [maquetistes.com](http://maquetistes.com)

## Miscellaneous

- [labolsera.com](http://labolsera.com)
- [montanashopbarcelona.com](http://montanashopbarcelona.com)
- [mokuba.com](http://mokuba.com)
- [rittagraf.com](http://rittagraf.com)
- [serveiestacio.com](http://serveiestacio.com)  
(15% discount on art supplies  
and 5% on the rest)

Interior Paper/  
Bio Top 100gr.

Cover Paper/  
Bio Top, 300gr.

Bio Top is the premium off-white paper choice for sustainable paper solutions. Produced totally chlorine free and bleached (TCF) without any optical brightening agents (OBAs), the paper retains a natural uncoated feel with an off-white shade, ensuring your stylish appearance.

This is Elisava.